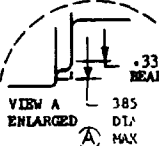
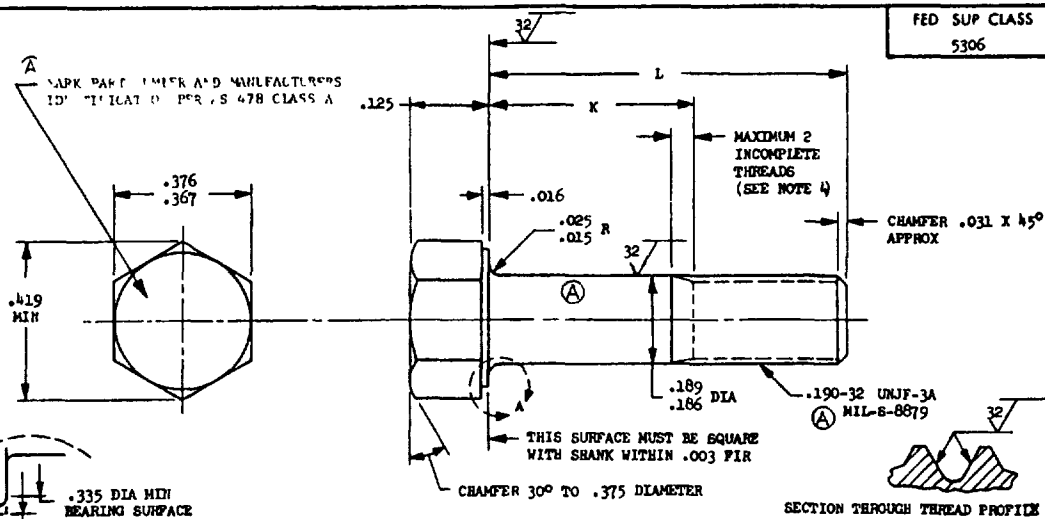


MS9489

FED SUP CLASS
5306



PART NUMBER	L	K	APPROX WEIGHT LB/100	PART NUMBER	L	K	APPROX WEIGHT LB/100
MS9489-04	.375	.072-.092	.72	MS9489-31	2.375	1.685-1.745	2.30
MS9489-05	.438	.072-.092	.77	MS9489-32	2.500	1.810-1.870	2.40
MS9489-06	.500	.072-.092	.82	MS9489-33	2.625	1.935-1.995	2.50
MS9489-07	.562	.072-.092	.87	MS9489-34	2.750	2.060-2.120	2.60
MS9489-08	.625	.072-.092	.92	MS9489-35	2.875	2.185-2.245	2.70
MS9489-09	.688	.072-.092	.97	MS9489-36	3.000	2.310-2.370	2.80
MS9489-10	.750	.072-.120	1.02	MS9489-37	3.125	2.435-2.495	2.89
MS9489-11	.812	.122-.182	1.07	MS9489-38	3.250	2.560-2.620	2.99
MS9489-12	.875	.185-.245	1.12	MS9489-39	3.375	2.685-2.745	3.09
MS9489-13	.938	.248-.308	1.17	MS9489-40	3.500	2.810-2.870	3.19
MS9489-14	1.000	.310-.370	1.22	MS9489-41	3.625	2.935-2.995	3.29
MS9489-15	1.062	.372-.432	1.27	MS9489-42	3.750	3.060-3.120	3.39
MS9489-16	1.125	.435-.495	1.32	MS9489-43	3.875	3.185-3.245	3.49
MS9489-17	1.188	.498-.558	1.37	MS9489-44	1.812	1.122-1.182	1.86
MS9489-18	1.250	.560-.620	1.41	MS9489-45	1.938	1.248-1.308	1.96
MS9489-19	1.312	.622-.682	1.46				
MS9489-20	1.375	.685-.745	1.51				
MS9489-21	1.438	.748-.808	1.56				
MS9489-22	1.500	.810-.870	1.61				
MS9489-23	1.562	.872-.932	1.66				
MS9489-24	1.625	.935-.995	1.71				
MS9489-25	1.688	.998-1.058	1.76				
MS9489-26	1.750	1.060-1.120	1.81				
MS9489-27	1.875	1.185-1.245	1.91				
MS9489-28	2.000	1.310-1.370	2.01				
MS9489-29	2.125	1.435-1.495	2.11				
MS9489-30	2.250	1.560-1.620	2.20				

User activities
Review activities: Army - 40, 41, 42, 43

- 1. SHANK SHALL BE STRAIGHT WITHIN .003 TOTAL PER INCH OF BOLT LENGTH
- 2. THE CONCENTRICITY OF THREAD PD IN RELATION TO THE SHANK SHALL BE WITHIN .006 FIR
- 3. THE CONCENTRICITY OF THE SHANK IN RELATION TO THE WASHER FACE DIAMETER AND HEXAGON SHALL BE WITHIN .011 FIR.
- 4. INCOMPLETE THREADS NOT TO ENTER FILLET.
- 5. MATERIAL CORROSION AND HEAT RESISTANT STEEL AMS 5731
- 6. MANUFACTURING SPECIFICATION AMS 7477.
- 7. FLUORESCENT PENETRANT INSPECTION PER AMS 2645
- 8. SURFACE TEXTURE USAS B46 1-1962 UNLESS OTHERWISE SPECIFIED SURFACES TO BE 125 MICROINCHES EXCEPT HEXAGON
- 9. BREAK SHARP EDGES .003-.015 UNLESS OTHERWISE SPECIFIED
- 10. DIMENSIONS IN INCHES. UNLESS OTHERWISE SPECIFIED, TOLERANCES: LINEAR DIMENSIONS ± .010, ANGULAR DIMENSIONS ± 5°.
- 11. DO NOT USE UNASSIGNED PART NUMBERS.

AS & AMS ARE SOCIETY OF AUTOMOTIVE ENGINEERS, INC. PUBLICATIONS
THIS STANDARD WAS DEVELOPED COOPERATIVELY WITH THE MILITARY SERVICES BY THE SAF AEROSPACE PART STANDARDS DIVISION

This military standard is approved by the Department of Defense and is mandatory on all activities. Selection for all new engineering and design applications and for repetitive use shall be made from this document.

PIA SAE - 11 Other Cust Army - AV Navy - AS	INTERNATIONAL ASC A14 JFD 17/2	TITLE BOLT, MACHINE - HEXAGON HEAD, FULL SHANK AMS 5731, 190-32 UNJF-3A	MILITARY STANDARD	
			MS9489	
PROCUREMENT SPECIFICATION SUPERSEDES:			SHEET 1	OF 1

DD FORM 672-1 (Coordinated)

PREVIOUS EDITIONS OF THIS FORM ARE OBSOLETE

REVISED 17 Nov 69
APPROVED 5 EBY 1965