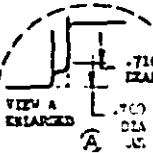
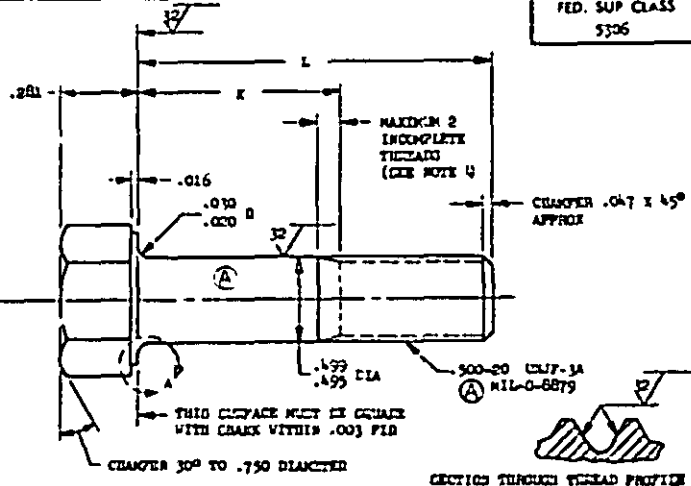
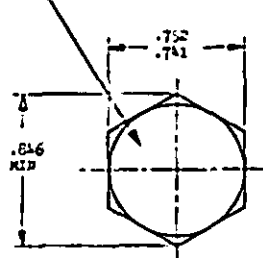


FED. SUP CLASS  
5306

MS9494

FACE PART NUMBER AND PART ACT NERS IDENTIFICATION FOR AS 470 CLASS A



SECTION THROUGH TYPICAL PROFILE

For activities: Review activities: Army - 12, 14

PART NUMBER	L	K	APPROX WEIGHT LB/100	PART NUMBER	L	K	APPROX WEIGHT LB/100
KC9A9A-04	.812	.105-.125	8.38	KC9A9A-31	3.250	1.540-2.000	21.51
KC9A9A-05	.875	.105-.125	8.73	KC9A9A-32	3.375	2.065-2.125	22.60
KC9A9A-06	.918	.105-.125	9.08	KC9A9A-33	3.500	2.190-2.250	23.30
KC9A9A-07	1.000	.105-.125	9.41	KC9A9A-34	3.625	2.315-2.375	24.99
KC9A9A-08	1.062	.105-.125	9.77	KC9A9A-35	3.750	2.440-2.500	24.60
KC9A9A-09	1.125	.105-.125	10.12	KC9A9A-36	3.875	2.565-2.625	25.38
KC9A9A-10	1.188	.105-.125	10.47	KC9A9A-37	4.000	2.690-2.750	26.07
KC9A9A-11	1.250	.105-.125	10.81	KC9A9A-38	4.125	2.815-2.875	26.76
KC9A9A-12	1.312	.105-.125	11.16	KC9A9A-39	4.250	2.940-3.000	27.46
KC9A9A-13	1.375	.105-.125	11.51	KC9A9A-40	4.375	3.065-3.125	28.16
KC9A9A-14	1.437	.125-.168	11.86	KC9A9A-41	4.500	3.190-3.250	28.85
KC9A9A-15	1.500	.150-.250	12.20	KC9A9A-42	4.625	3.315-3.375	29.54
KC9A9A-16	1.562	.252-.312	12.54	KC9A9A-43	4.750	3.440-3.500	30.23
KC9A9A-17	1.625	.315-.375	12.89	KC9A9A-44	4.875	3.565-3.625	30.92
KC9A9A-18	1.687	.378-.438	13.24	KC9A9A-45	5.000	3.690-3.750	31.62
KC9A9A-19	1.750	.440-.500	13.59	KC9A9A-46	5.125	3.815-3.875	32.31
KC9A9A-20	1.812	.565-.625	14.23	KC9A9A-47	5.250	3.940-4.000	33.00
KC9A9A-21	2.000	.628-.730	14.97	KC9A9A-48	5.375	4.065-4.125	33.70
KC9A9A-22	2.125	.631-.875	15.61	KC9A9A-49	5.500	4.190-4.250	34.39
KC9A9A-23	2.250	.540-1.000	16.36	KC9A9A-50	5.625	4.315-4.375	35.09
KC9A9A-24	2.375	1.065-1.125	17.05	KC9A9A-51	5.750	4.440-4.500	35.78
KC9A9A-25	2.500	1.190-1.250	17.75	KC9A9A-52	5.875	4.565-4.625	36.47
KC9A9A-26	2.625	1.315-1.375	18.44	KC9A9A-53	6.000	4.690-4.750	37.17
KC9A9A-27	2.750	1.440-1.500	19.13	KC9A9A-54	1.812	.302-.362	13.93
KC9A9A-28	2.875	1.565-1.625	19.83	KC9A9A-55	1.938	.628-.688	14.63
KC9A9A-29	3.000	1.690-1.750	20.52				
KC9A9A-30	3.125	1.815-1.875	21.22				

- CRACK SHALL BE STRAIGHT WITHIN .002 TOTAL PER INCH OF BOLT LENGTH
- THE CONCENTRICITY OF THREAD PD IS RELATED TO THE CHAMFER CALL IN WITHIN .006 FID.
- THE CONCENTRICITY OF THE CRACK IS RELATED TO THE CHAMFER DIAMETER AND HEXAGON CHALL IN WITHIN .023 FID.
- INCOMPLETE THREADS NOT TO ENTER FILLET.
- MATERIALS: CONSIDER AND HEAT RESISTANT STEEL AND 5731.
- MANUFACTURING SPECIFICATION: AMS 7477.
- FILE - SEE 20000000 IDENTIFIED PER AND 26A5.
- SURFACE FINISH: MIL-STD-1484 (UNLESS OTHERWISE SPECIFIED SURFACES TO BE 125 MICROINCHES EXCEPT HEXAGON)
- CRACK CRACK ENDS .003-.015 UNLESS OTHERWISE SPECIFIED.
- EDGING IS LINED, UNLESS OTHERWISE SPECIFIED; TOLERANCES: LINEAR DIMENSIONS ± .010, ANGULAR DIMENSIONS ± 5°.
- DO NOT USE UNFINISHED PART NUMBERS.

AD & AMS ARE SOCIETY OF AUTOMOTIVE ENGINEERS, INC. PUBLICATIONS.  
THIS STANDARD WAS DEVELOPED COOPERATIVELY WITH THE MILITARY SERVICES OF THE SAE AEROSPACE PART STANDARDS DIVISION

P.A. MAP - 11 Other Case	IDENTIFICATION	TITLE	MILITARY STANDARD
Army - 14 MAP - A3	MS9494	BOLT, MACHINE - HEXAGON HEAD, FULL CHAMF, AMS 5731, 500-20 UNF-3A	MS9494
PROCUREMENT SPECIFICATION	SUPERSEDES.		SHEET 1 OF 1

DD FORM 672-1 (Continued)

REVISIONS OF THIS FORM ARE OBSOLETE

APPROVED 5-27-55 REVISED 17 MAY 67